

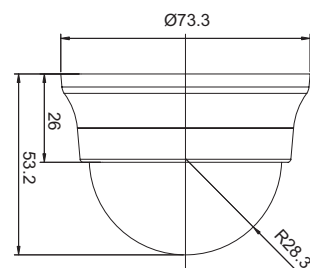
# FISH-EYE MINI WIDE ANGLE DOME



## Key Features

- A full line up from 420TV Lines, 480 TV Lines and resolution, providing fine, crisp and vivid high resolution image
- Outstanding artwork and mechanical design, suitable for all installations
- Selectable lenses providing a wide range selection for different viewing applications
- Built-in horizontal/ vertical adjusting mechanism for multi-dimensional adjustment
- Advanced wide range Auto Tracing White Balance (ATW), automatically adjusts white balance according to the color temperature in each environment
- Smart digital control Auto Back Light Compensation (BLC)
- Dynamic spherical option from 80, 130, 185 degree (diagram) to deliver crisp and sharp resolution
- Simple & quick combination providing user-friendly installation & maintenance
- Special design distortion-free acrylic dome cover

## Mechanical Dimension



## Technical Specifications

Model	DM-4080 , DM-4130, DM-4185 PAL / NTSC	DH-4080, DH-4130, DH-4185 PAL / NTSC
Image Device	1/4" interline transfer super HAD CCD	
Effective Pixels	510(H) x 492(V) NTSC 768(H) x 494(V) NTSC	500(H) x 582(V) PAL 752(H) x 582(V) PAL
Scanning System	NTSC: 2:1 Interlace PAL: 2:1 Interlace	
Sync System	Internal lock	
Resolution	420 TV Lines	480 TV Lines
AGC	Auto Gain 0~36dB	
S/N Ratio	Better than 48dB	
Electronic Shutter	NTSC: 1/60 ~ 1/100,000 sec PAL: 1/50 ~ 1/100,000 sec	
White Balance Control	ATW (3200°K - 7500°K)	
Gamma Compensation	0.45	
Minimum Illumination	2 Lux at F2.2 (30 IRE)	
Digital Noise Reduction	Automatic	
Video Output signal	Composite: 1Vp-p at 75 Oload	
Viewing Angle	DM-4080 / DH-4080=80° DM-4130 / DH-4130=130° DM-4185 / DH-4185=185°	
Lens mount	80/130/185 degree fixed board lens (default) at F2.2	
Power Range	DC 12V ± 10%	
Power Consumption	Under 50mA	
Operation Temperature	-10 °C - +50°C	
Overall Camera Dimensions	46 x 40 mm	

► Specifications are subjected to change without prior notice.